

M3 MOBILE

Rugged Mobile Computer with Full Touch Screen



M3 SM10

Looking for a rugged smartphone designed for industry?



Android 4.3 Jelly Bean



5" Full Touch Screen
Gorilla Glass 3 applies



IP67 Sealing / 1.5m drop



3.8G WWAN
IEEE 802, 11 a/b/g/h



1D / 2D Imager



NFC (Optional)



1.2 GHz Quad Core CPU



Battery 4100mA / 6150mA



Physical Plastic functions keys



Android 4.3 Jelly Bean

01 Robust and rugged smartphone!

A Smartphone with present styling meets the industrial durability

02 With a user-friendly design!

The physical keys unlike normal smartphones have an ergonomic design which allows accurate working

03 Expertise in intensive scanning, staying smart!

Smartphone with scanner built in and designed for industrial field overcomes the discomforts from bluetooth scanner with consumer smartphones

Detail features



5inch full-touch screen (Gorilla Glass 3 applied)

Legible through 5 inch full-touch screen, easy to use even with wearing heavy gloves, resistant to scratch and rugged applying Gorilla Glass 3.

High visibility LCD



1D / 2D scanner

Capable of rapid data capture and process adopting the outperforming scanner, therefore enables workers more efficient to time.

User Comfort



Physical plastic functions keys applied

Accurate and easy to use physical keys for scanning, home and function buttons.



Android 4.3 Jelly Bean

Accessible to various accessories, with Android 4.3 Jelly Bean capable of applying Bluetooth Smart and minimizing power consumption.

Excellent durability



IP67 sealing, 1.5m drop

Durable smartphone of IP67 withstands 1.5m with protective boots and temperatures down to -30°C.

Endurance



Standard / Extended battery

(Li-ion 3.8V, 4,100mAh / Li-ion 3.8V, 6,150mAh)
4,100mAh battery enables users to stay consistent enough on task without discharge and 6,150mAh battery even extends its hours of use.



M3 SM10

SM10 is brand-new smartphone designed for logistics.

In year 2015, M3 launched new revolutionary model in both physical and performance perspective.

New M3 SM10 features:

Quad-Core

SM10 Quad-Core provides optimum working condition with 30% of improved AP than previous Dual-Core.

Display

Wider LCD 5 inch full touch screen makes easy to use even with wearing heavy gloves and Gorilla Glass 3 adopted with the first in the field is more resistant to crash and scratches.

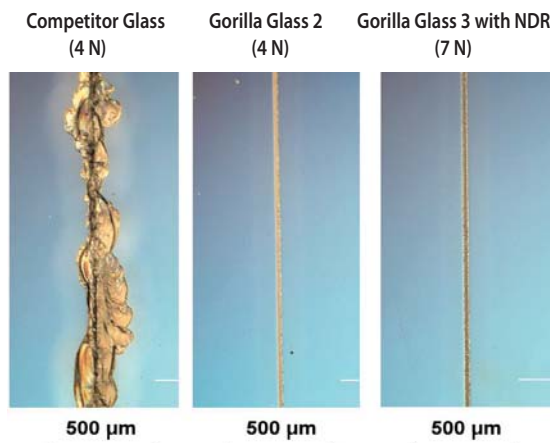
Dual SIM

SM10 is equipped with Dual SIM slots which can be used separately or in separate services. (Upper :SIM or SAM / Lower :SIM only)

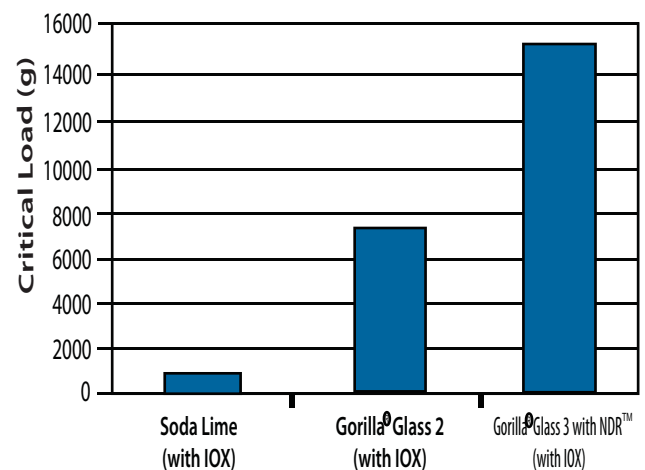


Scratches are less visible

Knoop Visual Scratch Test
After Ion Exchange



Greater damage resistance



Scanner

SM10 has 1D/2D hardware scanner module, which supports faster and more comfortable working.

Battery

SM10 provides both standard 4100mAh and extended 6150mAh batteries and it secures maximum working time.

Keypad

Big size of Physical plastic keys make users to protect from malfunction.

Accessories



Specification

Physical Characteristics

DIMENSION (W x H x D mm)	76.4 x 154.8 x 21.6 mm 3 x 6.09 x 0.85 in
WEIGHT	336 g / 11.8 oz
DISPLAY	5" HD TFT LCD 1280 x 720 pixels
BATTERY	Standard Li-ion 3.8 V 4,100mAh Extended Li-ion 3.8 V 6,150mAh

Performance Characteristics

PROCESSOR	CPU 1.2 GHz Quadcore
OS	Android 4.3 Jelly Bean
MEMORY	RAM 1 GB
	ROM 8 GB
	Card Slot Micro SD (up to 32 GB)
INTERFACE	Docking connector; Micro USB
SENSORS	G-Sensor, Proximity Sensor, Motion Sensor, Light Sensor

User Environment

TEMPERATURE	Operating - 20 to 60° C
	Storing - 30 to 60° C
HUMIDITY	95% non-condensing
DROP TEST	1.2m / 1.5 m (with protective boot)
IP RATING	IP67

Wireless Radio Options

WWAN	2G GSM / GPRS / EDGE: Quad band (850 / 900 / 1800 / 1900 MHz)
	3G EVDO / CDMA / HSDPA / HSUPA (800 / 2100 MHz)
WLAN	IEEE 802.11 a/b/g/n
BLUETOOTH	Class II, v4.0 (with EDR)
GPS	A-GPS, GLONASS

General Options

SCANNER	1D Laser, 2D Imager
CAMERA	Front 2.0M Pixels
	Rear 8.0M Pixels Auto Focus Camera

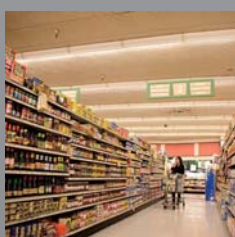
* The contents of this brochure were written based on the "current state" of the product, and the details are subject to change without prior notice.

Certifications



Applicable Area

M3 SM10, like other M3 Mobile products, can be used in warehouse management, logistics, government branches, asset management and so on. With its enhanced hardware and upgraded operating system, M3 SM10 meets users' needs well. It can therefore be used in many work environments.



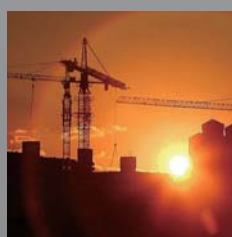
<Distribution>



<Manufacturing>



<Logistics>



<Construction>



<Food & Beverage>



<Public>